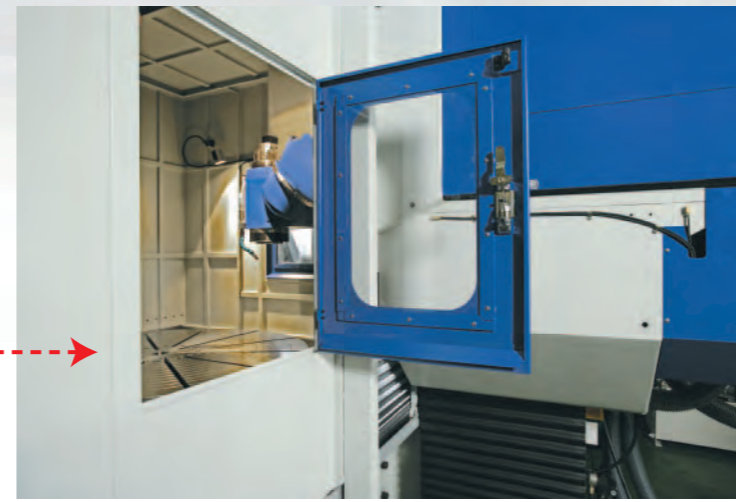
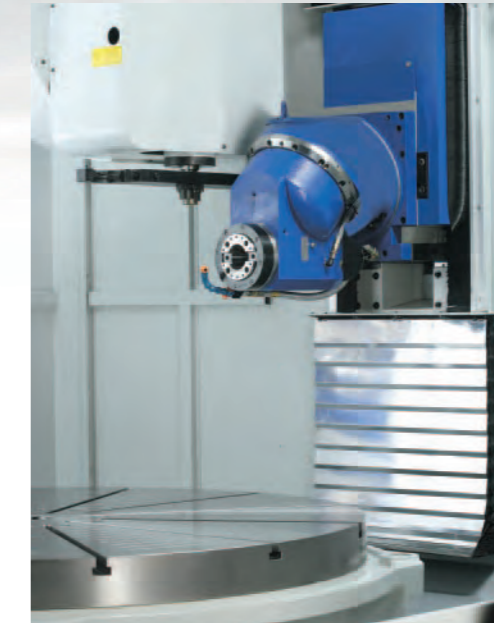


THE YZC-1650 ROTARY TABLE TYPE UNIVERSAL MACHINING CENTER WITH COMPACT DESIGN AND HAS BEEN DEVELOPED TO SATISFY THE NEEDS OF TOP DEMANDING COMPANIES AT TECHNOLOGICAL LEVEL. THIS MACHINE EXECUTION ALLOWS ALLROUND MACHINING ALMOST IN ONE SET-UP.

- Standard 24 automatic tool changer, option 32 / 40 / 60 stations ATC are available.

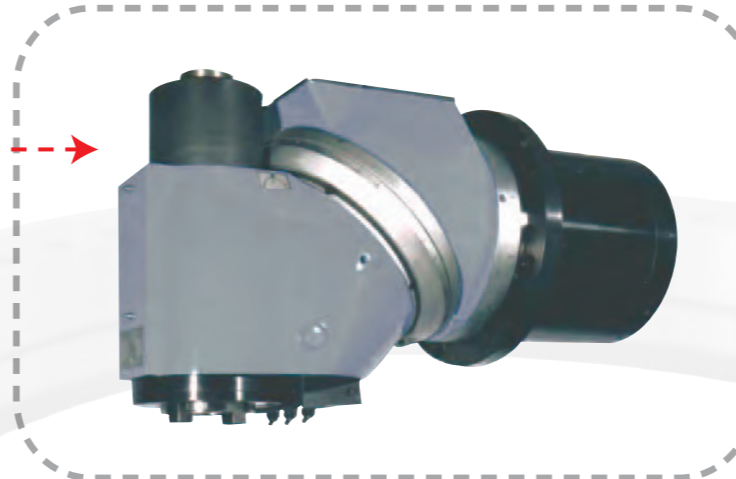


• Side viewing window

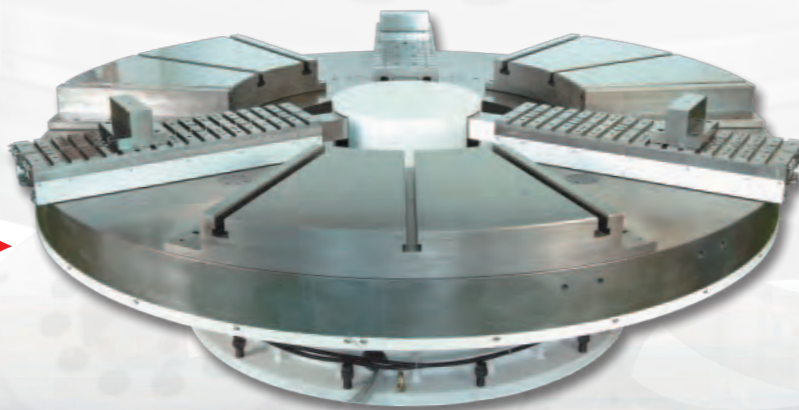


• Standard automatic vertical & horizontal milling head with BT#50/3500RPM/811Nm

OPTIONS:



• VH-2.5 Head with automatic 2.5 degree index 2 axis milling head, total 144x144 positions.



• ϕ 2000 / 2500 / 3000mm rotary tables, with 3 jaw manual chuck & 3 extra loading tracks etc.

• Standard ϕ 1650mm CNC rotary table, 8000kg load.

• Standard automatic vertical & horizontal milling head with BT#50/3500RPM/811Nm



• Compact designed & totally enclosed full splash guard

Model	Specifications	YZC-1650
Travel (Y,Z axis)	Y axis : milling head forward & backward by sliding ram	1000mm
	Z axis : milling head up & down by sliding saddle	952mm
Rotary table (C axis)	Table dimension	φ 1650mm
	Table to floor	929mm included 30mm leveling pads
	Maximum loading	8000KG
	Indexing increment	0.001° x 360,000 positions
	T slots	radial type 12 slots with 22mmH7
Vertical & horizontal milling head	Maximum speed	3500 rpm
	Spindle power (S1 / S6)	17KW / 22KW
	Spindle taper	BT#50
	Front bearing diameter	90 mm
	Vertical to horizontal time	12 seconds
Distance	Vert. spindle nose to table top	0 ~ 952mm
	Vert. spindle nose to table center	1149mm
Axis Feed rate	Horiz. spindle center to table top	0 ~ 1002mm
	Horiz. spindle nose to table center	1099mm
Axis Transmission	Rapid feed Y / Z / C	10M / 10M / 4.16 RPM
	Cutting feed	5 m / min
ATC	Y & Z linear axis	φ 50mm C3 ball screw
	C rotary axis	dual lead worm gear
Weight	Tool holder type	BT#50
	Pull stud	BT#50
	Tools number	24 pieces
	Max.tool dia. / length / weight	φ 120 mm / 300mm / 15kg
	Tools exchanging method	swing arm at vertical position
	Net (before packing)	16 ton

Standard features & accessories :

1. Standard features & accessories :
2. Siemens 810D CNC control
3. 3500RPM automatic V/H milling head
4. 24 stations automatic tool changer
5. BT#50 spindle taper & ATC
6. full splash guarding with sliding roof
7. programmable coolant system
8. automatic lubrication system

Optional features & accessories :

1. Fanuc or Heidenhain CNC control
2. 20 bars (290 PSI) coolant thru spindle
3. 1500mm Vertical Z axis travel
4. linear scale on YZ & rotary encoder on C
5. VH-2.5 or VH-5 multi-angled head
6. 32/40/60 stations automatic tool changer



EUMACH FAMILIES



• VMC-2150
Vertical machine center
400MM ~ 3200MM X axis travel



• TVMC-2000 / 3000
Moving column machine center
2320MM & 3320MM X axis travel



• LBM-1000
High speed bridge type machine center
1100MM ~ 2200MM X axis travel



• MH-500
Horizontal machine center
720MM x 650MM x 650MM travel



• EBM-2150
5 Face machine center
1400MM ~ 3200MM X axis travel



• MB-1500
Moving column horizontal machine center
1100MM ~ 2200MM X axis travel



• DVM-4025
5 Face & double column machine center



• FBE-1500
Universal milling machine
1500MM ~ 4000MM X axis travel



• UMC-1000
5 Axis machine center
1000MM x 800MM x 700MM travel

Eumach Co.,LTD.

★ Specifications subject to change without notice.
Catalogue No.98040302

2, YING LIN LANE, HO SHENG ST., HO SHENG VILLAGE,
SHIH KANG HSIANG, TAICHUNG HSIEN, TAIWAN, 422, R.O.C.
TEL:886-4-25810031 FAX:886-4-25810003
E-mail:eumach.coltd@msa.hinet.net; eumach@ms8.hinet.net
http://www.eumach.com

Eumach
ROTARY TABLE TYPE
UNIVERSAL MACHINING CENTER



YZC-1650

EMC / CE / ISO CERTIFIED

A PROFESSIONAL CNC MACHINES MANUFACTURER